

23RD ANNUAL GENERAL MEETING OF THE SOUTHERN AFRICAN GRAIN LABORATORY NPC

We measure so that you know!

Since 1997



Thank you for being part of
our journey!



THE SOUTHERN AFRICAN GRAIN LABORATORY NPC

CHAIRMAN'S REPORT 2019/2020



LIST OF CONTENTS

- ✓ Foreword by the Chairman
- ✓ Strategic Intent, Aim & Value Statements
- ✓ History & Milestones
- ✓ Board Members
- ✓ Core Business & Focus areas
- ✓ COVID-19: Impact on SAGL testing activities
- ✓ Presentations
- ✓ Popular Articles
- ✓ Professional Affiliations
- ✓ Human Capital
 - ✓ Appointments
 - ✓ SAGL Team
- ✓ Proficiency Tests Offered
- ✓ Accreditation
 - ✓ Proficiency Participation
 - ✓ Compliance Certificates and Awards
- ✓ Financial Position
- ✓ Conclusion
- ✓ Acknowledgements

FOREWORD BY THE CHAIRMAN

It is an honour to deliver the 23rd Chairperson's Report of the SAGL for the financial year 2019/2020.

For the past 23 years, the focus of the SAGL was to develop, maintain and expand the capacity and capability to perform quality analyses on different grain and oilseed commodities. Benchmarking through participation in proficiency schemes is part of the ongoing quality assurance procedures to demonstrate technical competence and international comparability. This is necessary to effectively support the grain and oilseed value chain. The significance and value of the National Crop Quality Surveys conducted on wheat, maize, soybeans, sunflower seed and sorghum cannot be over emphasised, especially in pandemic circumstances that the entire world is currently experiencing. These surveys serve as evidence of the grain industry's commitment to provide enough and safe food to the South African society and therefore contribution to the country's food security imperatives. The Trusts' investment in the annual Crop Quality Surveys have created a unique and extremely useful database of crop quality measurements over several seasons and regions. The quality of imported grains which forms part of these surveys provides a good foundation for quality comparisons between local and imported grain.

The **Crop Protection Division** of the SAGL, with both ISO 17025 accreditation and OECD GLP Compliance, continues to provide independent and internationally recognised services to customers both locally and abroad. This division, which is aligned with the strategic imperatives to expand the services base of the laboratory for long-term growth and sustainability, performed well during the period under review.



MR. BOIKANYO MOKGATLE
CHAIRPERSON 2019/2020

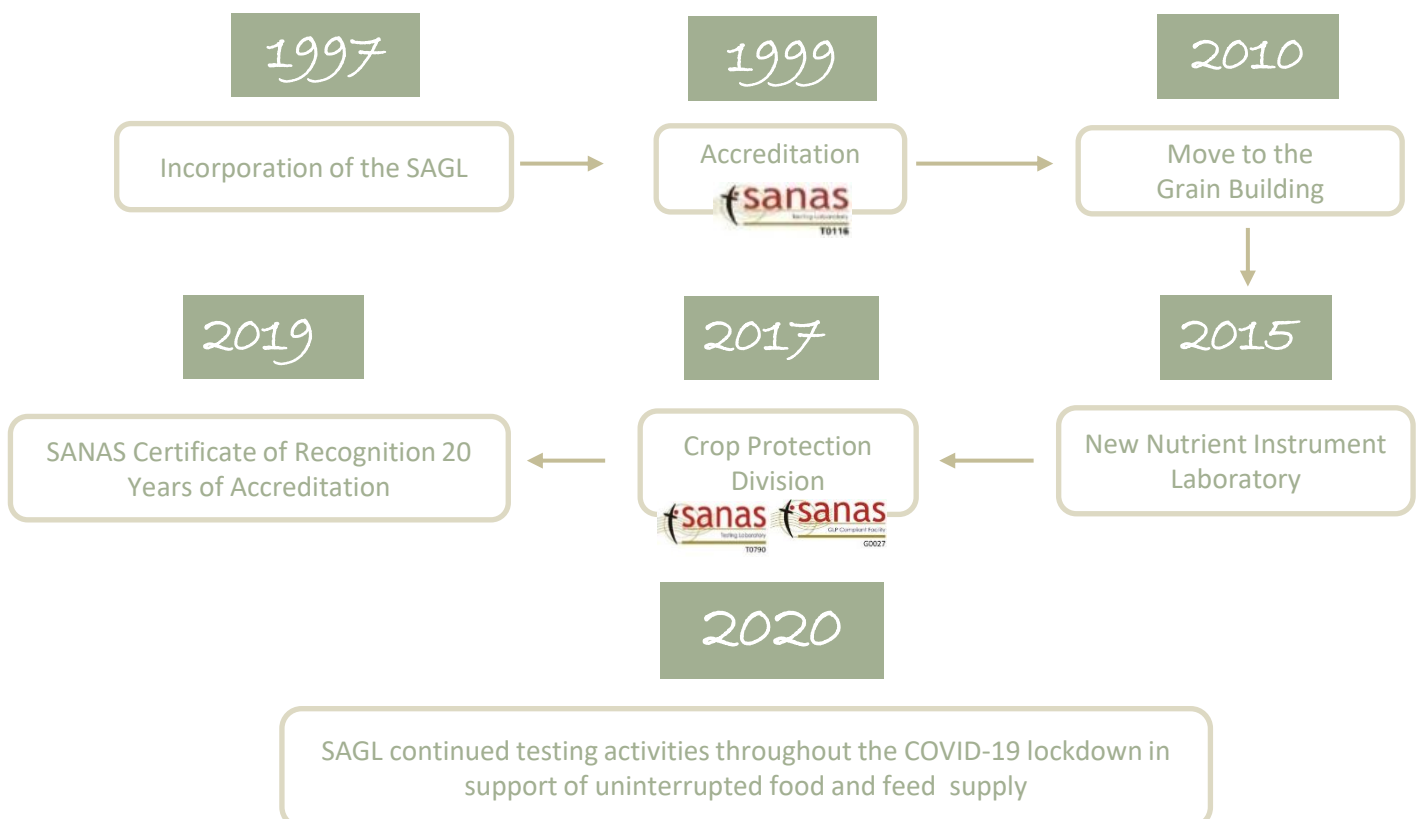
INTRODUCTION

The Southern African Grain Laboratory is an ISO 17025 accredited institution. It was established in 1997 as a reference laboratory for the South African Grain Industry. The main focus of the laboratory is grain and oilseed quality testing conducted in the Crop Quality Division. The Plant Protection Products testing is done in the Crop Protection Division.

STRATEGIC INTENT, AIM & VALUE

- STRATEGIC INTENT** To be recognised as market leader in grain and oilseed analysis and related services in Southern Africa.
- AIM** To be the analytical service provider of choice for the grain and oilseed industries to enhance competitiveness and sustainability.
- VALUE** Accurate measurements, agricultural prosperity, social responsibility and good governance.

HISTORY AND MILESTONES



BOARD OF DIRECTORS

MR. ERWIN POTGIETER
PROCESSING: MILLING

MR. BOIKANYO MOKGATLE
PROCESSING: MILLING

DR. MARINDA VISSER
PRODUCTION: WHEAT
(UNTIL APRIL 2020)

MR. JANNIE DE VILLIERS
PRODUCTION: MAIZE

MR. GEOFF PENNY
PROCESSING: BAKING

MR. DE WET BOSHOFF
PROCESSING: ANIMAL FEED

MR. GERRIT ROOS
PRODUCTION: SOYBEAN

MS. MARIANA PURNELL
STORAGE & HANDLING
(UNTIL JUNE 2020)

MR. WESSEL LEMMER
STORAGE & HANDLING
(SINCE JULY 2020)

DR. ERHARD BRIEDENHANN
RESEARCH

MR. DIRK KOK
TRADING

MR. JAAP VAN DER WESTHUIZEN
ALTERNATE FOR PRODUCTION

EXECUTIVE COMMITTEE MEMBERS



Mr Boikanyo Mokgatle
Chairperson



MS. MARIANA PURNELL
EXECUTIVE COMMITTEE MEMBER
(UNTIL JUNE 2020)

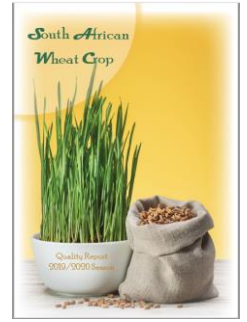
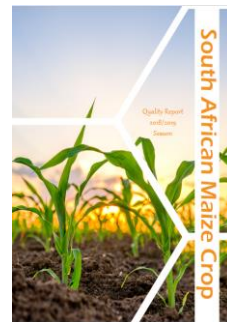
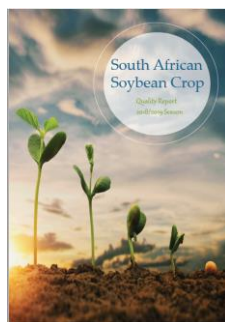


MR. DE WET BOSHOFF
VICE CHAIRPERSON



DR. ERHARD BRIEDENHANN
EXECUTIVE COMMITTEE MEMBER

RECENT CROP QUALITY REPORTS



CORE BUSINESS

The Southern African Grain Laboratory (SAGL) complies with the requirements of the international ISO 17025 standard for testing laboratories as well as the OECD Principles of Good Laboratory Practice. This accreditation allows the laboratory to provide fit-for-purpose measurement results to the Agricultural Industry, which is accurate, comparable and internationally accepted.

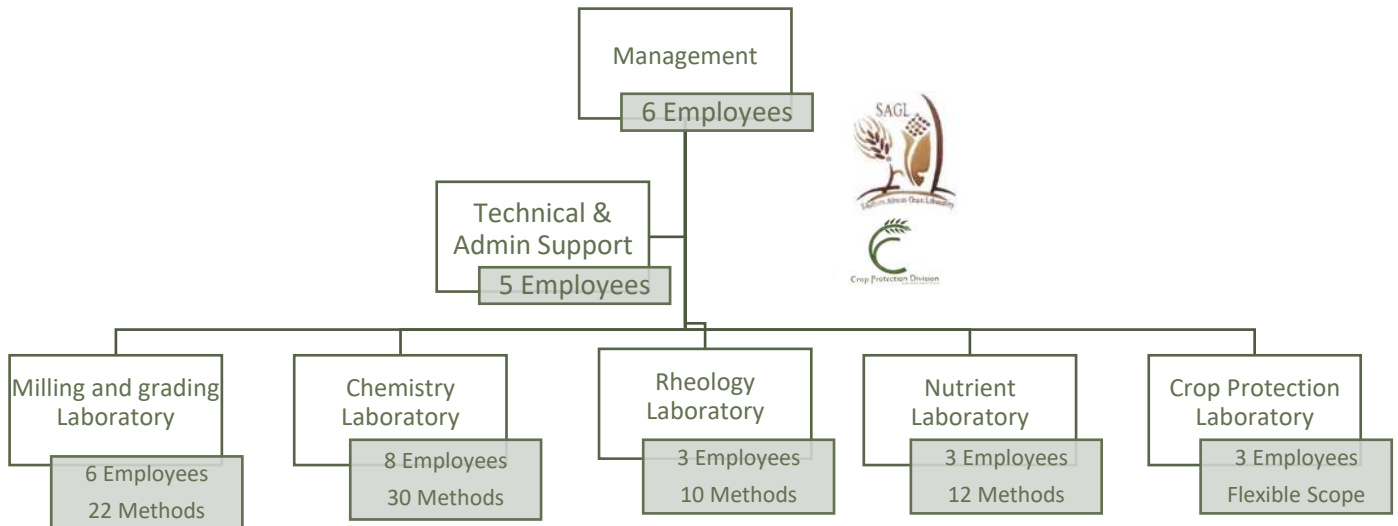


Figure 1: SAGL core business and capacity in different areas

The scope of testing offered in both the crop quality and the crop protection divisions is determined by the needs of the industry. With changes in the regulatory environment, the scope of the laboratory is expanded to ensure a service in support of a competitive agricultural industry in South Africa.

Through continuous engagement with stakeholders, the market requirements for quality and safety of food and feed in high-value markets are addressed as far as possible. The valuable database of results from the annual crop quality surveys on different grain and oilseed commodities creates opportunities for collaborative research studies and the development of unique tools for the grains and oilseeds industries. This also facilitates public private partnerships for the ever changing regulations. (The different testing areas included in the scope of testing are illustrated in Figure 1.)

CORE BUSINESS



REVENUE SOURCES 2019/2020

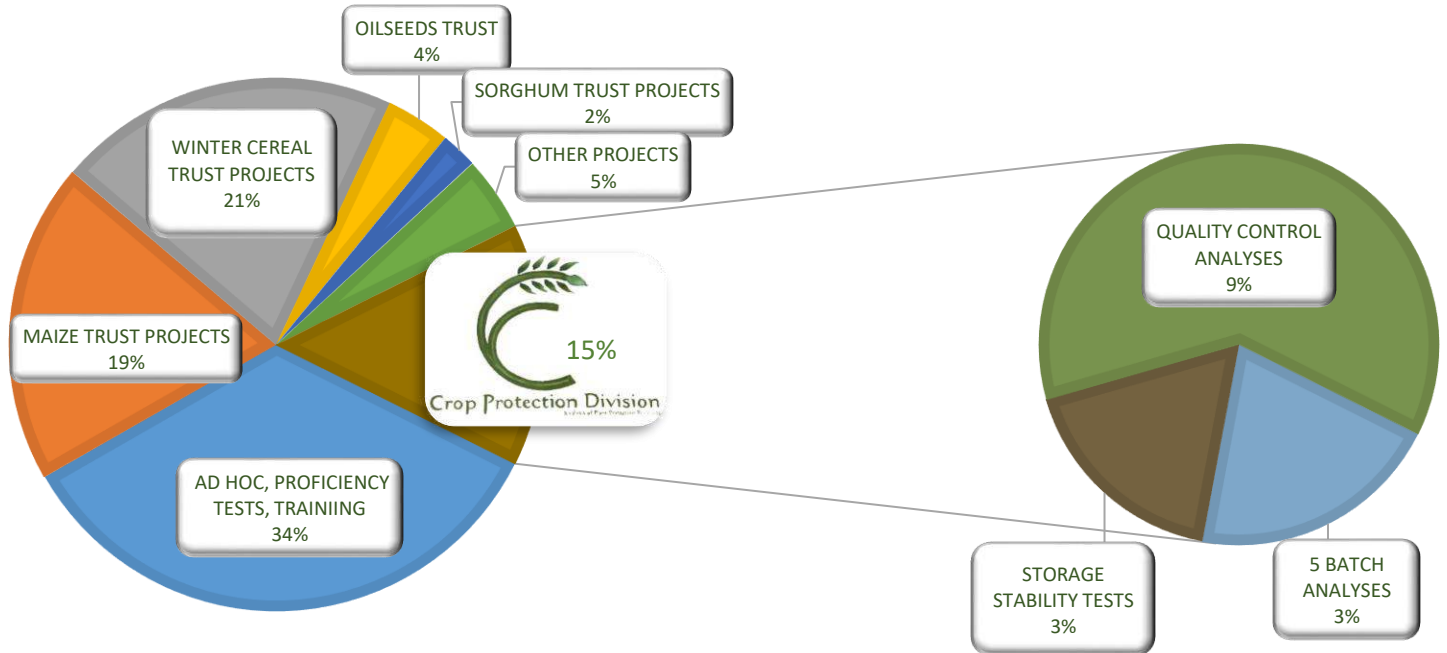


Figure 2: Different Revenue Sources for 2019/2020 financial year



Figure 3: Customer base and customer count of the SAGL: Crop Quality and Crop Protection

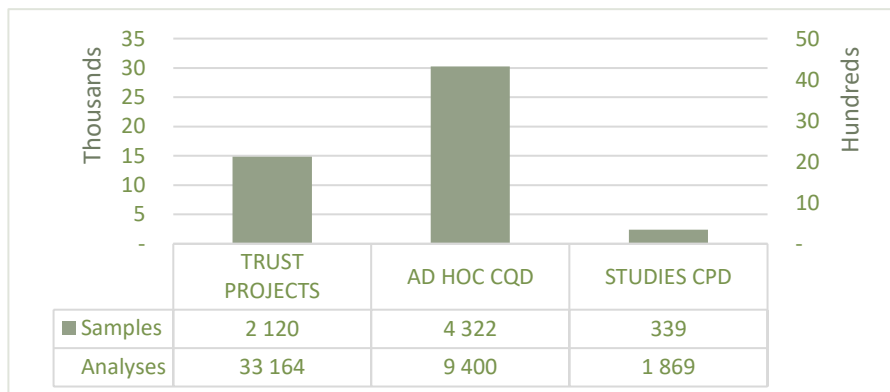


Figure 4: Number of samples and total number of analyses performed on these samples

The focus areas of the Crop Quality Division:

<u>CROP QUALITY SURVEYS:</u> MAIZE, WHEAT, SOYBEANS, SUNFLOWER SEEDS AND GRAIN SORGHUM	<u>BREEDING – WHEAT CULTIVARS</u>	<u>IMPORTED WHEAT AND MAIZE</u>	<u>ANALYSES ON REQUEST FOR INDUSTRY</u>	<u>TRAINING COURSES OFFERED</u>	<u>SAGL PROFICIENCY SCHEMES OFFERED (RINGTESTS)</u>	<u>RESEARCH PROJECTS & ADDITIONAL REQUESTS (EXAMPLES)</u>
Grading, Milling and Physical testing	Milling and Physical testing	Grading, Milling and Physical testing	Grading, Milling and Physical testing	Wheat and wheat flour	Grading	Milling Index Calibration Maize Meal Calibration Yellow Maize Calibration
Nutritional Values	Nutritional Values	Nutritional Values	Nutritional Values	Maize meal	Wheat flour	Mycotoxin analyses for research study on characterising fungal communities
Rheological and baking tests (Wheat)	Rheological and baking tests	Rheological and baking tests (Wheat)	Rheological and baking tests (Wheat)	Grading	Maize meal	Fortification analyses for new Regulations Shelf life studies on final products
Amino Acids, Vitamins, Minerals		Mycotoxins	Amino Acids, Vitamins, Minerals	ISO 17025 quality systems	Wheat colour	Data mining of crop quality data
Mycotoxins			Mycotoxins	Mycotoxins		Sampling devices evaluation



Maize Crop Quality Survey since 1997



Wheat Crop Quality Survey since 1998



Soybean Crop Quality Survey since 2011



Sunflower Crop Quality Survey since 2012

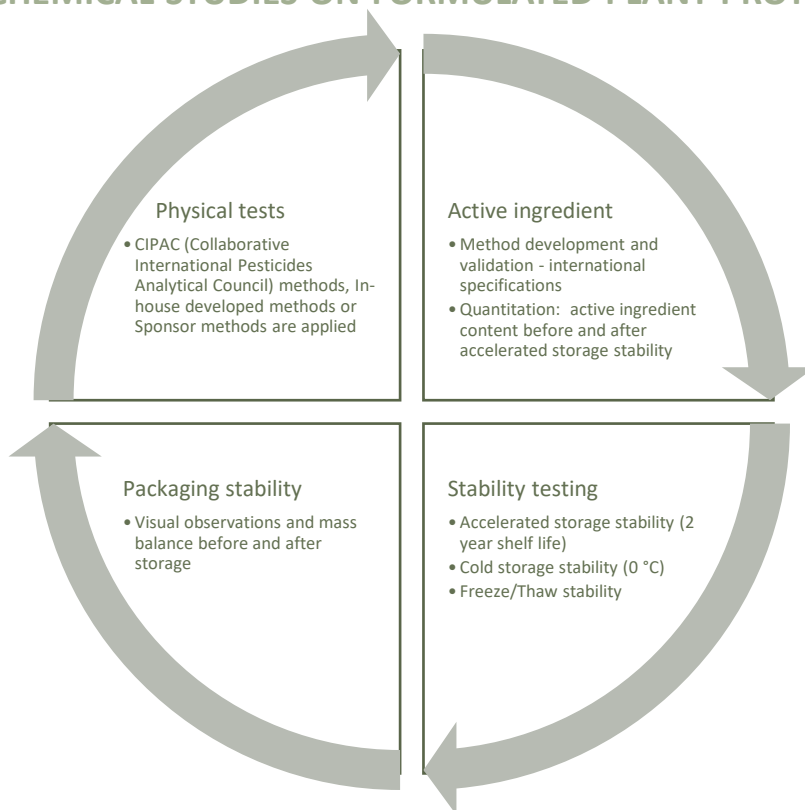


Grain Sorghum Crop Quality Survey since 2018

The focus areas of the Crop Protection Division:



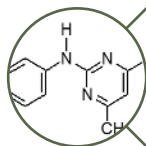
PHYSICAL AND CHEMICAL STUDIES ON FORMULATED PLANT PROTECTION PRODUCTS



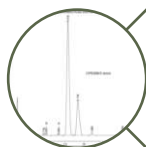
5-BATCH TESTING (OECD GLP OR ISO 17025)



5-Batch analysis is a regulatory requirement in the global Agrochemical Industry



Five or more batches of technical material, from a specific manufacturer, are analysed to determine the impurity profile and to assess the purity and concentration of the active ingredient



All relevant impurities (of toxicological significance) are quantified to ensure compliance with international specifications



This work is usually conducted according to OECD GLP (OECD Series on Principles of Good Laboratory Practice (GLP) and Compliance Monitoring).

COVID-19: IMPACT ON SAGL

TESTING ACTIVITIES

SAGL, as an important link in the grain and oilseed food and feed value chain, continued to deliver important testing services to the industry in support of an uninterrupted food supply to humans and animals. Laboratories were classified as essential services under the lockdown Regulations. During the first couple of months since the lockdown was announced, laboratory services continued, only a limited number of staff, on a rotational basis.

Because of the broad scope of testing and the interrelatedness of the results generated in the different laboratories, all the laboratories had to be operational to be able to issue test certificates.

With increased activity when the country moved from level 5 lockdown to level 4 and 3, an increase was experienced in the numbers of samples submitted for analyses. The number of staff that formed part of the rotating schedule were increased to cope with the workload.

The SAGL's compliance with the requirements as specified in the ISO 17025:2017 standard as well as the principles of Good Laboratory Practice as prescribed by the Organization for Economic Co-operation and Development (OECD) assisted with implementing health and safety requirements published as part of the efforts to prevent the spread of the virus. The different testing areas within the SAGL fortunately enabled employees to maintain a safe distance while conducting the analyses.

A positive outcome was that the importance and necessity of the SAGL in the grain and oilseed value chain to ensure an uninterrupted supply of safe and enough nutritious food, was accentuated.

Two global events, World Metrology Day which was celebrated on 20 May 2020 and World Accreditation Day on the 9th of June 2020, underlined the importance of accurate, accredited measurements in support of food safety – even more important during uncertain times caused by a pandemic such as covid-19.

SAGL conducted quality control analyses on samples of staple food commodities produced for food aid programmes, to ensure that the most vulnerable people had access to safe food.

Throughout all levels of the lockdown, the laboratory remained involved (via virtual meetings) in discussions related to the proposed changes to Regulations such as grading and fortification, the consolidation of regulatory food testing laboratories in South Africa and the structuring of inspection services and testing in the grain and oilseed industry.



PRESENTATIONS

- *Services to the grain industry in SA – special focus on wheat*: WCT Board of Trustees – November 2019, Wiana Louw
- *Services to the Agricultural Industry in SA*: Chinese Delegation - laboratory visit – December 2019, Wiana Louw
- *Quality of grain and oilseed crops – services offered by the SAGL*: VKB Discussion Group – January 2020, Wiana Louw
- *Sorghum Crop Quality & Imports*: GSA Sorghum Working Group Meeting – February 2020, Wiana Louw
- *Sunflower and Sorghum Quality Feedback*: GSA Congress – March 2020, Wiana Louw
- *Proficiency Testing – why and how?*: Agbiz Grain Steering Committee – August 2020, Wiana Louw
- *Feedback on WCT Funded projects*: WCT Technical Committee Meeting, September 2020, Wiana Louw
- *Feedback on WCT Funded projects*: Wheat Forum Meeting, September 2020, Wiana Louw
- *Feedback on Sorghum Trust Funded Projects*: Sorghum Forum Meeting – October 2020, Wiana Louw
- *Mycotoxins – natural contaminants in grain – A South African Perspective* - The Future of Food Assistance for Nutrition: Evidence Summit II – October 2020, Hannalien Meyer



POPULAR ARTICLES

Wheat Focus / Koringfokus

- *COVID-19: Impact on grain, food and feeds testing laboratory* - Wiana Louw
- *Evaluering en vrystelling van nuwe broodkoringkultivars in die afgelope drie jaar* - Jolanda Nortjé
- *Koring oes en invoer kwaliteitsoorsig* – Jolanda Nortjé



SA Grain/SA Graan

- *Quality of grain and oilseed crops – a service offered by the SAGL* – Wiana Louw
- *Sunflower Crop Quality Survey now includes fatty acid profile analyses* – Jolanda Nortjé
- *Soybean Crop quality - the results are in* - Jolanda Nortjé
- *Sorghum Quality tested in latest survey* – Jolanda Nortjé
- *Maize Crop Quality in the spotlight* - Jolanda Nortjé
- *Local and imported Wheat Quality reviewed* - Jolanda Nortjé
- *Nuwe broodkoring kultivars vrygestel die afgelope drie jaar* - Jolanda Nortjé

Oilseeds Focus

- *Soybean Crop Survey results for the 2018/2019 production season* - Jolanda Nortjé
- *Sunflower Crop Survey Results for the 2018/2019 production season* - Jolanda Nortjé
- *The how and why of proficiency testing schemes* – Wiana Louw

PROFESSIONAL AFFILIATIONS

SAGL IS REPRESENTED ON THE FOLLOWING COMMITTEES/ASSOCIATIONS:

- ✓ AACCI: American Association of Cereal Chemists International (United States of America)
- ✓ AFMA: Animal Feed Manufacturers Association
- ✓ AgriLASA: Agri Laboratory Association of South Africa
- ✓ Campden BRI (UK Based)
- ✓ ChromSA: Chromatographic Society of South Africa
- ✓ Co-opted on various Industry Technical Committees
- ✓ CropLife South Africa
- ✓ CST-SA: Cereal Science and Technology -SA
- ✓ GOSA: Grain Handling Organisation of South Africa
- ✓ NLA: National Laboratory Association of South Africa
- ✓ SAAMS: South African Association for Mass Spectrometry
- ✓ SAAFoST: South African Association for Food Scientists
- ✓ SACI: The South African Chemical Institute
- ✓ SA-RFTL Forum: SA-Regulatory Food Testing Laboratory Forum
- ✓ Technical Committees of the Winter Cereal Trust
- ✓ Wheat Focus Editorial Committee

HUMAN CAPITAL

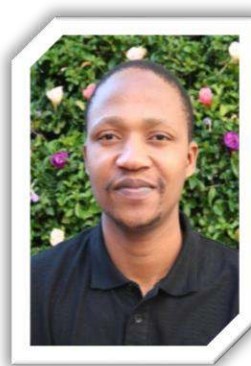
The major asset and key to the success of the laboratory is our competent and motivated staff complement. The internal training skills development programme of the SAGL continued during the lockdown period. The annual Management Review is used to evaluate the in-house, on-the-job training processes to maintain our much needed skills base.

In December 2019, Jafta Kobola was promoted to the vacant grader position on completion of his grading qualifications for different commodities. During the period under review, Mamsy Motlanthe, an analyst in the nutrient laboratory for the last seven years, was promoted to the vacant QA Manager position. The vacancy in the nutrient laboratory was filled with the appointment of Thato Mabobo.

VACANT POSITIONS FILLED



MAMSY MOTLANTHE – QUALITY ASSURANCE MANAGER



JAFTA KOBOLA – ANALYST/GRADER – MILLING AND GRADING LABORATORY



THATO MABOBO – ANALYST – NUTRIENT LABORATORY

MEET THE SAGL TEAM

MANAGEMENT



Jolanda



Hannalien



Wiana



Beatrix



Janet



Mamsy

RHEOLOGY

CONSULTANTS

SUPPORT



Dudu



Ilse



Theresa



Corinda



Rita



Natasja



Odille



Caroline

MILLING AND GRADING

CHEMISTRY



Ben



Johannes



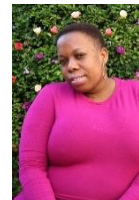
Jafta



Dineo



Gianni



Maphela



Marelize



Thabang



Tumelo



Emmanuel



Lebo



Julia



Kele



Marie

NUTRIENTS AND CONTAMINANTS

CROP PROTECTION



Zanele



Andriëtte



Thato



Gerty



Francé



Carin

SAGL PROFICIENCY TESTING SCHEMES

In its capacity as reference laboratory for grains and oilseeds, SAGL offers proficiency testing to participants from South Africa and other countries in Africa. For the past four years SAGL has acted as the expert laboratory for the East African Proficiency Scheme (EAPT).

The participants use the Proficiency testing as independent assessments of their quality control measures to monitor equipment, personnel and analytical methods. These proficiency tests serve as a powerful tool for a laboratory or testing facility to demonstrate competency to stakeholders in the grain and oilseed sector. The proficiency tests offered by the SAGL are detailed below.

Please contact us for our price list and more information on check samples which we have available.

Contact Person: Theresa de Beer

Email: Theresa.deBeer@sagl.co.za

Tel: +27 12 807 4019

Table 1: Proficiency tests offered by the SAGL – 2019/20

DESCRIPTION	INTERVAL	PRODUCT	LOCAL PARTICIPANTS	INTERNATIONAL PARTICIPANTS	COUNTRIES	TOTAL
SAGL ANNUAL PRE-HARVEST MAIZE GRADING PROFICIENCY TEST	Per Season	Maize	-	-	-	-
SAGL ANNUAL PRE-HARVEST SOYA BEANS GRADING PROFICIENCY TEST	Per Season	Soya beans	-	-	-	-
SAGL ANNUAL PRE-HARVEST SUNFLOWER GRADING PROFICIENCY TEST	Per Season	Sunflower	-	-	-	-
SAGL MINOLTA DRY COLOUR PROFICIENCY TEST	Bi-monthly	White bread flour & Cake flour	10	1	Botswana	11
SAGL MAIZE GRADING PROFICIENCY TEST	Quarterly	2 x White Maize 2 x Yellow Maize	7	2	Lesotho & Namibia	9
SAGL MAIZE MEAL QUALITY PROFICIENCY TEST	Quarterly	2 x Super Maize Meal 2 x "Special" Maize Meal	3	3	Swaziland, Lesotho, Namibia & Botswana	6
SAGL WHEAT GRADING PROFICIENCY TEST	Quarterly	Wheat	16	2	Lesotho & Namibia	18
SAGL WHEAT AND FLOUR PROFICIENCY TEST	Quarterly	Wheat, Wheat flour & Brown bread flour	20	10	Ghana, Nigeria, Lesotho, Swaziland, Senegal, Namibia, Cameroon, Botswana	30

ACCREDITATION

SANAS (South African National Accreditation System) conducts surveillance audits in an 18-month cycle to confirm compliance with the International Organisation for Standardisation (ISO/IEC) 17025.

Accurate measurements are assured through the maintenance of SAGL's accreditation status to support a competitive grains and oilseeds industry. Participation in international proficiency schemes, to demonstrate competence, is used to benchmark the laboratory to the international measurement system.


Refer to page 18 for more detail on the scope of accreditation.

Table 2: The comprehensive range of test methods on different matrices covered to confirm traceability to international standards across the entire range of analyses offered to the industry by SAGL.

PROFICIENCY SERVICE PROVIDER	FREQUENCY OF PARTICIPATION SAMPLES PER YEAR	MATRIX	ANALYSIS	ACCREDITED
American Association of Cereal Chemists International (AACCI) United States of America	6	Wheat Flour	Moisture & Alveograph	✓
		Hard Wheat Flour	Moisture, Protein, Ash, Falling number and Diastatic activity*	✓
		Feed Samples	Moisture, Protein, Ash, Crude fat (EE) and Crude fibre*	✓
		Different Grain Based Matrices	Moisture & Total dietary fibre	✓
		Hard Wheat Flour	Moisture & Farinograph	✓
		Wheat Flour	Moisture & Mixograph	✓
		Different Matrices	Moisture, Vitamins & Minerals	✓
Bureau Interprofessionnel der Etudes Analytiques (BIPEA) France	10	Wheat Flour (Different types)	Moisture, Protein, Falling Number, Ash, Damaged starch*, Gluten (Wet & Dry) *, Gluten index*, Alveograph	✓
		Wheat Flour (Different types)	Moisture and Farinograph	✓
	5	Different Matrices	Mycotoxins	✓
	10	Amino Acids (Animal feed)	Protein, Free and Protein bound amino acids*	
The Food and Environmental Research Agency (FAPAS) United Kingdom	10	Various Mycotoxin Matrices	Mycotoxins	✓
	1	Various Sample Matrices	Melamine*	
	5	Bread Crumbs / Biscuits / Cereal / Soy bean meal / Poultry ration	Moisture, Ash, Nitrogen, Starch*, Total dietary fibre, Crude fat, Crude fibre* and Sodium	✓
AgriLASA South Africa	6 x per year; 12 samples	Various Feed Samples	Moisture*, Protein, Ash, Crude fat, Crude fibre*, Dietary fibre, Starch* and Minerals	✓
NMISA	2	Maize	Mycotoxins	✓
Romer Labs Check-Sample-Survey	1	Maize and Wheat	Mycotoxins	✓
Aflatoxin Proficiency Testing and Control in Africa, Asia and Americas (APTECA)	2	Maize	Aflatoxins B ₁ , B ₂ , G ₁ , G ₂	✓
World-wide Inter-Laboratory: World Grain Network	1 x per year; 10 samples each	Barley (Milled)	Moisture & Protein	✓
		Wheat (Milled)	Moisture, Protein, Falling number and Wet gluten*	✓
		Canola/Rapeseed (milled)	Moisture & Crude fat	✓
Association of American Pesticide Control Officials (AAPCO)	2	Pesticide Formulations	Different active ingredient content	✓
National Laboratory Association – South Africa (NLA)	3	Pesticide formulations	Tests: Active ingredients content Physical tests: Suspensibility*, Emulsion stability*, Foaming*, pH range*, Density, etc.	✓

* Not accredited method

COMPLIANCE CERTIFICATES AND AWARDS




**OUTSTANDING PROFICIENCY
RATING CERTIFICATE**

Rheology Testing Series – Alveograph (ALV)
Moisture, Maximum Overpressure, Average Abscissa at Rupture, Index of Swelling, Curve Configuration Ratio, Dough Strength, Elasticity Index

The Southern African Grain Laboratory NPC
AACC Laboratory Proficiency Rating Program 2019

[Signature]
Executive Vice President

[Signature]
President



**OUTSTANDING PROFICIENCY
RATING CERTIFICATE**

Flour Analysis Series – Hard Wheat Flour (HW2)
Moisture, Protein, Ash, Falling Number, Diastatic Power

The Southern African Grain Laboratory NPC
AACC Laboratory Proficiency Rating Program 2019

[Signature]
Executive Vice President

[Signature]
President



Certificate of Participation

THIS CERTIFIES THAT


SAGL Crop Protection Division, Pretoria, Republic of South Africa (Lab #111) participated in the 2019 AAPCO Check Sample Program.

The results of this participation are contained in the 2019 AAPCO Pesticide Formulations Check Sample final report.

[Signature] April 5, 2019

Ping Wan
Chair, AAPCO Check Sample Program

Dated



PARTICIPATION CERTIFICATE

Label Analysis Series – Vitamins, Minerals, and Proximates (VMP)

The Southern African Grain Laboratory NPC
AACC Laboratory Proficiency Rating Program 2019

[Signature]
Executive Vice President

[Signature]
President

COMPLIANCE CERTIFICATES AND AWARDS



AFMA hereby certify that

SAGL

complies with the following criteria of the AFMA Code of Conduct for the Manufacturing of Safe Compound Animal Feedstuffs

- ✓ All legal requirements in terms of Act 35 of 1984, Act 36 of 1947 and Act 101 of 1956 must be complied with.
- ✓ Animal Feed Manufacturers must meet the requirements of Good Manufacturing Practice (GMP) to ensure feed safety.
- ✓ Animal Feed Manufacturers must recognize the importance of a Food Safety Management System and adopt the relevant procedures.
- ✓ Technical animal feed recommendations and formulation must be carried out by qualified Animal Scientists that are registered with the South African Council for Natural Scientific Professions (Act 27 of 2003).
- ✓ Animal Feed Manufacturers must comply with the Basic Conditions of Employment Act.
- ✓ Animal Feed Manufacturers must promote the AgriBEE Act as laid down by the National Department of Trade and Industry.
- ✓ Animal Feed Manufacturers must comply with the Occupational Health and Safety Act.
- ✓ Animal Feed Manufacturers must comply with all relevant legal requirements so as to not bring the Industry, Association or its members into disrepute.
- ✓ Animal Feed Manufacturers' mills, must at a confirmed date be available for auditing for the conformance to the AFMA Code of Conduct by an accredited body which will be appointed by AFMA.
- ✓ Animal Feed Manufacturers will comply with the MAIN OBJECT of AFMA as stipulated in its Memorandum of Association – "The main object of the Company is to promote the interests of its members and those of the animal feeds industry and the community insofar as they relate to each other".

19 July 2019 - 19 July 2021
Date

[Signature]
AFMA Chairperson

[Signature]
AFMA Executive Director
A/2019/300

CERTIFICATE SERTIFIKAAT

IT IS HEREBY CERTIFIED THAT
HIERWEE WORD GESERTIFIEER DAT

**SOUTHERN AFRICAN GRAIN LABORATORY
FEEDS / VOIERE**

FOR THE PERIOD OF
VIR DIE TYPENK WYN

01/05/2019 TO 31/12/2020
TOT

DATE OF ISSUE: 10 JULY 2020

PARTICIPATED IN THE QUALITY ASSURANCE SCHEME AND CONFORMED TO THE REQUIREMENTS
IN RESPECT OF THE FOLLOWING DETERMINATIONS
AAN DIE KWALITEITS MONTERINGS SKEMA EN AAN DIE VEREISTES MET BETREKKING TOT DIE
VOLGENDE BEPALINGS VOLDOEN HET

Crude Fibre	Fat	Moisture	Nx6.25-Protein
Starch			

EVALUATION CRITERIA
2-WAARDE TUSSEN -2 AND 2 PARTICIPATION ≥ 85%

EVALUASIE KRITERIA
2-WAARDE TUSSEN -2 EN 2 DEELNAME ≥ 85%

[Signature]
PRESIDENT

[Signature]
QUALITY COORDINATOR





This is to certify that

Southern African Grain Laboratory (SAGL)

is a member of the

NATIONAL LABORATORY ASSOCIATION

SOUTH AFRICA

for

2020

31 December 2020
EXPIRY DATE

[Signature]
CHAIRMAN




CERTIFICATE OF PARTICIPATION

PROFICIENCY TESTING PROGRAMS

This certificate is awarded to:

SOUTHERN AFRICAN GRAIN LABORATORY NPC
THE WILLOWS - PRETORIA - South Africa

for its participation in BIPEA's interlaboratory comparisons for the 2019-2020 annual series.

Thursday, July 9, 2020 - Paris FRANCE

BIPEA member

BIPEA Director

Certificate n° 19-20 / 11119



We measure so that you know



ISO 17025 ACCREDITATION AND OECD GLP COMPLIANCE

The scope of SAGL's accreditation is aligned with the needs of the Industry. It expanded over the years as regulatory requirement and needs changed.

Technical Signatories form the backbone of a successful quality system – the development and training of laboratory personnel to become technical signatories were a primary focus of the SAGL over more than 20 years since the laboratory achieved its accreditation. SAGL prides itself in maintaining this solid foundation.

		
		
<p>ISO 17025 Accredited Since 1999 Scope: 22 Methods Technical Signatories: 15</p>	<p>ISO 17025 Accredited Since 2017 Flexible Scope: HPLC & GC/GC-MS, Density Technical Signatories: 3</p>	<p>OECD Principles of GLP Compliant Since 2017 Study Directors: 2</p>

Virtual assessment
No non-conformances raised
1 New Technical Signatory approved (full scope)
Continued accreditation recommended

SANAS AUDITS/INSPECTIONS DURING 2019/2020:

- **Crop Protection Division** – ISO 17025 Audit: 28 October 2020
- **Crop Protection Division** – OECD GLP Inspection: Scheduled 6 April 2020 – SANAS postponed inspection due to Covid-19
- **Crop Quality Division** – ISO 17025 Audit: Scheduled: February 2021

FINANCIAL POSITION

The annual financial statements were prepared on the basis of accounting policies applicable to a going concern. The directors believe that the company has adequate financial resources to continue in operation for the foreseeable future and accordingly the annual financial statements have been prepared on a going concern basis.

The directors have satisfied themselves that the company is in a sound financial position and that it has access to sufficient borrowing facilities to meet its foreseeable cash requirements. However, Capex is required to sustain the organisation. The directors are not aware of any material noncompliance with statutory or regulatory requirements or of any pending changes to legislation which may affect the company. The Independent Auditors' Report indicates no material inconsistencies between the Directors' Report and the audited financial statements.

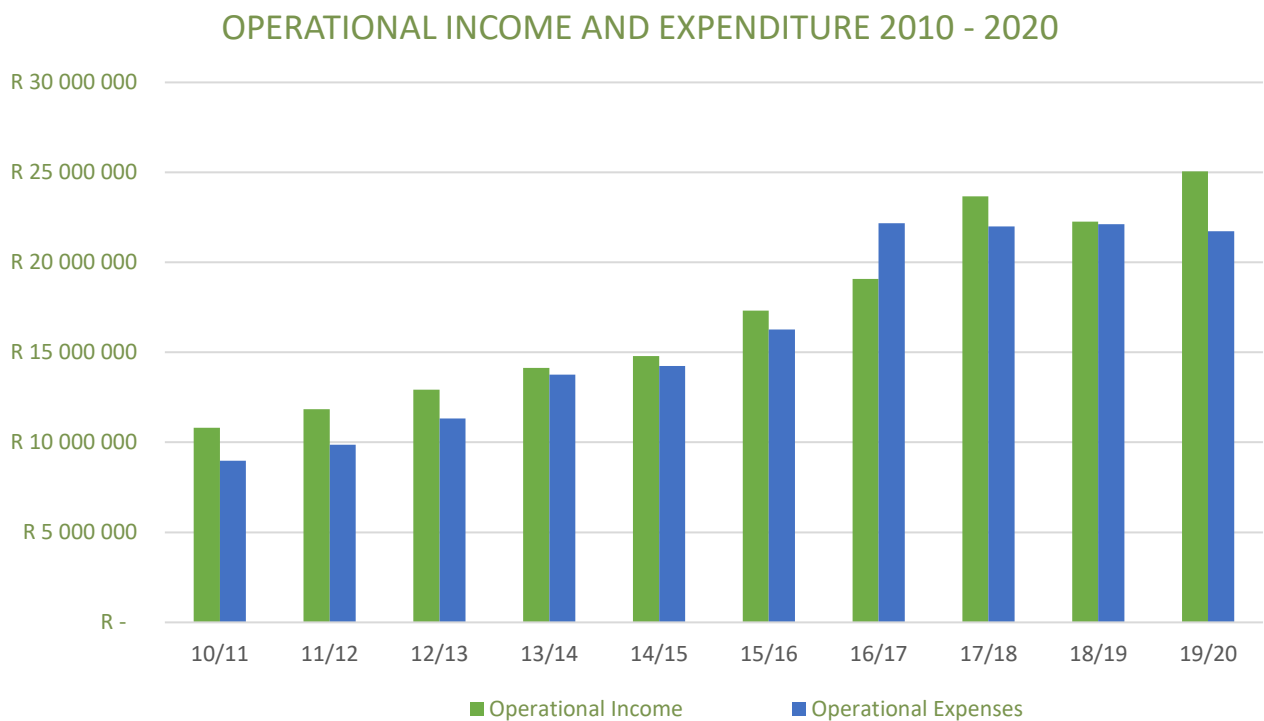


Figure 5: Operational Income & Expenditure of the SAGL over the last ten financial years

CONCLUSION

The relevance and reputation as a reference laboratory of choice were highlighted during the COVID-19 pandemic. The SAGL fulfilled an important role during the different phases of lockdown to ensure an uninterrupted supply of food and feed.

The SAGL differentiates itself through the use of internationally recognised procedures and methods to generate credible, quality analyses results compliant with international standards for testing laboratories.

It is committed to contribute towards improving the country's food safety and quality control systems as well as continue to support and enhance industry's international competitiveness.

ACKNOWLEDGEMENTS

Gratitude to fellow Board members for support, commitment and strategic leadership. A special word of gratitude to Marinda Visser and Mariana Purnell for their contribution over the past eight years. We wish them all the best with their new careers.

To the Executive Committee members, thank you for the all sacrifices and hard work.

Lastly, acknowledge the ever hard working management team and staff for keeping the SAGL's flag so visibly high. Your courageous and concerted efforts are highly commendable.

MR. BOIKANYO MOKGATLE
CHAIRPERSON 2019/2020

THE SOUTHERN AFRICAN GRAIN LABORATORY NPC

The Southern African Grain Laboratory NPC (SAGL) is an independent non-profit laboratory, established in 1997, to act as a Reference Laboratory for the grain and oilseed industry. The SAGL provides an internationally competitive range of laboratory services for grain, oilseeds and products thereof including food, feed and feedstuffs. These services are driven by the needs of the broader grain industry.

The scope of analysis in the Crop Quality Division includes milling, grading, physical, chemical, rheological, baking, mycotoxin as well as macro- and micro nutrient analyses. ISO 17025 accredited test methods are implemented within a comprehensive quality system. Participation in several national and international proficiency schemes demonstrates technical competency, international comparability and traceability to international standards. The stakeholders serviced by the SAGL include grain and oilseed producers, the handling and storage industry, processors including the baking, milling and animal feed producing industries, traders of agricultural commodities, commercial seed breeding companies, agricultural research institutes and since 2016, also companies producing crop protection products.

The scope of analysis in the Crop Protection Division is designed to support the broader agricultural community in Southern Africa with accurate and reliable analytical results for registration purposes and after manufacturing, quality control analysis of the final plant protection products as well as shelf-life extension.

This Division performs 5-batch analysis on technical material as well as the Physical, Chemical and stability testing on formulations as prescribed by the Food and Agricultural Organization of the United Nations (FAO) and the World Health Organization (WHO). This laboratory is equipped to perform most tests required by FAO/WHO according to the latest Collaborative International Pesticides Analytical Council (CIPAC) methods.

As an associate member of CropLife South Africa, the SAGL is informed of changes in local and international requirements.

