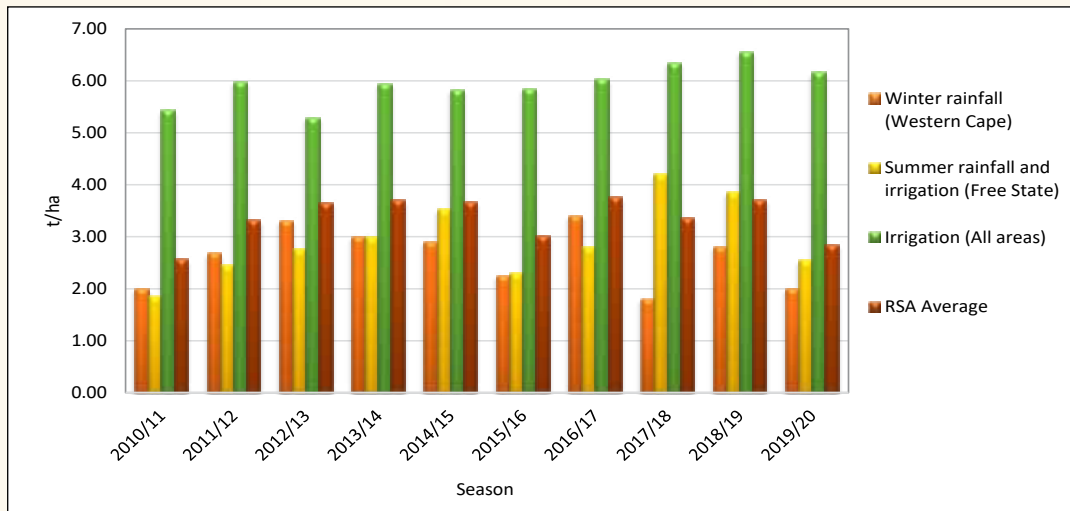


Graph 4: Average yield per production area over ten seasons



Figures provided by the CEC.

Table 1 provides an overview of the dry land versus irrigation wheat production over the last two seasons.

Table 1: Wheat production overview over two seasons

Province	Type of production	2019/20			2018/19		
		Hectares planted, ha	Production, tons	Yield, t/ha	Hectares planted, ha	Production, tons	Yield, t/ha
Western Cape	Dryland	317 000	618 800	1.95	315 700	880 600	2.79
	Irrigation	8 000	31 200	3.90	2 300	9 900	4.30
	Total	325 000	650 000	2.00	318 000	890 500	2.80
Northern Cape	Dryland	-	-	-	150	90	0.60
	Irrigation	37 500	262 500	7.00	37 850	294 410	7.78
	Total	37 500	262 500	7.00	38 000	294 500	7.75
Free State	Dryland	84 500	97 500	1.15	58 000	124 500	2.15
	Irrigation	43 500	228 500	5.25	42 000	260 500	6.20
	Total	128 000	326 000	2.55	100 000	385 000	3.85
Eastern Cape	Dryland	190	255	1.34	400	1 000	2.50
	Irrigation	2 910	17 895	6.15	1 250	9 730	7.78
	Total	3 100	18 150	5.85	1 650	10 730	6.50
KwaZulu-Natal	Dryland	-	-	-	-	-	-
	Irrigation	7 500	45 750	6.10	7 000	43 400	6.20
	Total	7 500	45 750	6.10	7 000	43 400	6.20
Mpumalanga	Dryland	-	-	-	-	-	-
	Irrigation	4 000	25 200	6.30	3 500	22 740	6.50
	Total	4 000	25 200	6.30	3 500	22 740	6.50
Limpopo	Dryland	3 200	10 000	3.13	1 000	2 500	2.50
	Irrigation	16 800	110 000	6.55	19 000	125 500	6.61
	Total	20 000	120 000	6.00	20 000	128 000	6.40
Gauteng	Dryland	90	270	3.00	-	-	-
	Irrigation	1 310	8 130	6.21	1 200	7 800	6.50
	Total	1 400	8 400	6.00	1 200	7 800	6.50
North West	Dryland	-	-	-	-	-	-
	Irrigation	13 500	79 000	5.85	14 000	85 330	6.10
	Total	13 500	79 000	5.85	14 000	85 330	6.10
RSA	Dryland	404 980	726 825	1.79	375 250	1 008 690	2.69
	Irrigation	135 020	808 175	5.99	128 100	859 310	6.71
	Total	540 000	1 535 000	2.84	503 350	1 868 000	3.71

Figures provided by the CEC.