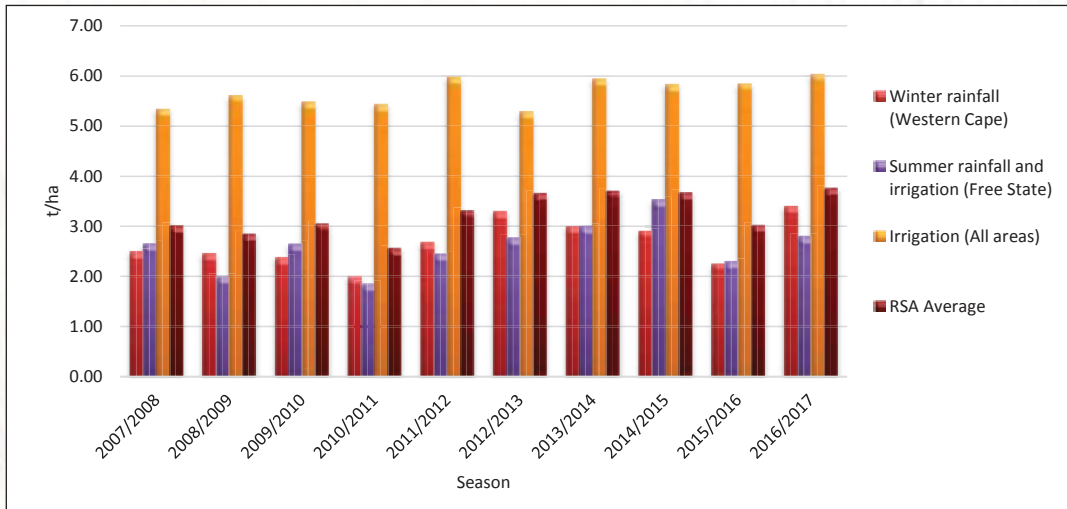


**Graph 4: Average yield per production area over seasons**



Figures provided by the CEC.

Table 1 provides an overview of the dry land versus irrigation wheat production in the 2016/2017 season, compared to the 2015/2016 season.

**Table1: Wheat production overview over two seasons**

Province	Type of production	2015/2016			2016/2017		
		Hectares planted, ha	Production, tons	Yield, t/ha	Hectares planted, ha	Production, tons	Yield, t/ha
Western Cape	Dryland	305 500	680 500	2.23	315 000	1 055 700	3.35
	Irrigation	4 500	17 000	3.78	8 000	42 500	5.31
	Total	310 000	697 500	2.25	323 000	1 098 200	3.40
Northern Cape	Dryland	1 000	600	0.60	1 000	1 000	1.00
	Irrigation	35 000	258 600	7.39	34 000	265 000	7.79
	Total	36 000	259 200	7.20	35 000	266 000	7.60
Free State	Dryland	55 500	60 000	1.08	86 000	184 000	2.14
	Irrigation	24 500	116 500	4.76	24 000	124 460	5.19
	Total	80 000	176 500	2.21	110 000	308 460	2.80
Eastern Cape	Dryland	1 033	1 860	1.80	700	1 700	2.43
	Irrigation	2 067	13 020	6.30	1 500	9 300	6.20
	Total	3 100	14 880	4.80	2 200	11 000	5.00
KwaZulu-Natal	Dryland						
	Irrigation	7 300	41 000	5.62	6 500	37 050	5.70
	Total	7 300	41 000	5.62	6 500	37 050	5.70
Mpumalanga	Dryland				300	900	3.00
	Irrigation	3 500	19 500	5.57	2 000	12 900	6.45
	Total	3 500	19 500	5.57	2 300	13 800	6.00
Limpopo	Dryland	1 500	1 020	0.68	850	2 000	2.35
	Irrigation	25 500	143 400	5.62	16 150	101 700	6.30
	Total	27 000	144 420	5.35	17 000	103 700	6.10
Gauteng	Dryland	50	100	2.00	30	70	2.33
	Irrigation	200	1 400	7.00	335	2 120	6.33
	Total	250	1 500	6.00	365	2 190	6.00
North West	Dryland	570	950	1.67	80	200	2.50
	Irrigation	14 430	84 550	5.86	11 920	69 400	5.80
	Total	15 000	85 500	5.70	12 000	69 600	5.80
RSA	Dryland	365 153	745 030	2.04	403 960	1 245 570	3.08
	Irrigation	116 997	694 970	5.94	104 405	664 430	6.36
	Total	482 150	1 440 000	2.99	508 365	1 910 000	3.76

Figures provided by the CEC.