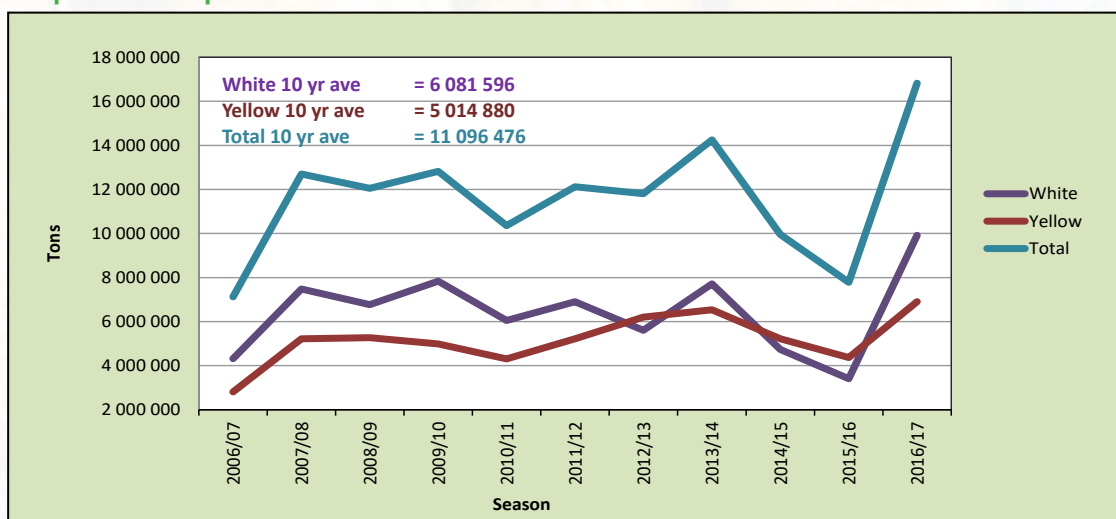


Production

The finalized crop figure for commercial maize for the 2016/2017 season as overseen by the National Crop Estimates Liaison Committee (CELC) is 16 820 000 tons. This all-time high record crop is more than double that of the severely drought affected 2015/2016 season and 51.6% higher than the previous 10-year crop average (11 096 476 tons). White maize's contribution to the total production was 9 916 000 tons (59%) and that of yellow maize 6 904 000 tons (41%).

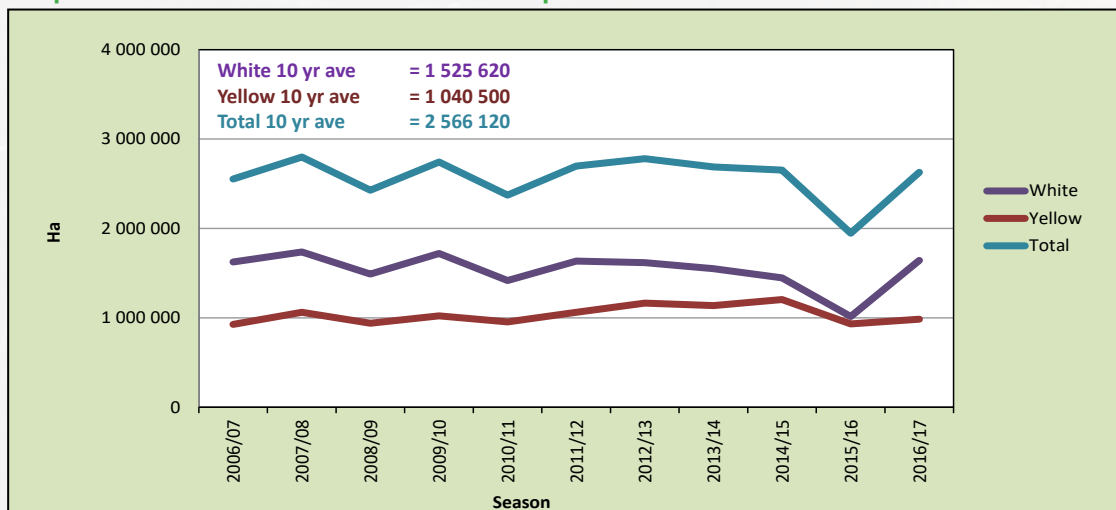
The national Crop Estimates Committee's (CEC) estimated total production figures were revised, using as basis for the calculations, the South African Grain Information Services' (SAGIS) published figures of actual deliveries. Figures to determine on-farm usage and retentions from the maize utilization survey, which was conducted by the Department of Agriculture, Forestry and Fisheries (DAFF) and the telephonic survey conducted by the National Crop Statistics Consortium (NCSC), were added to the SAGIS delivery figures to calculate the final crop production figures.

Graph 2: Maize production in RSA from 2006/2007 to 2016/2017



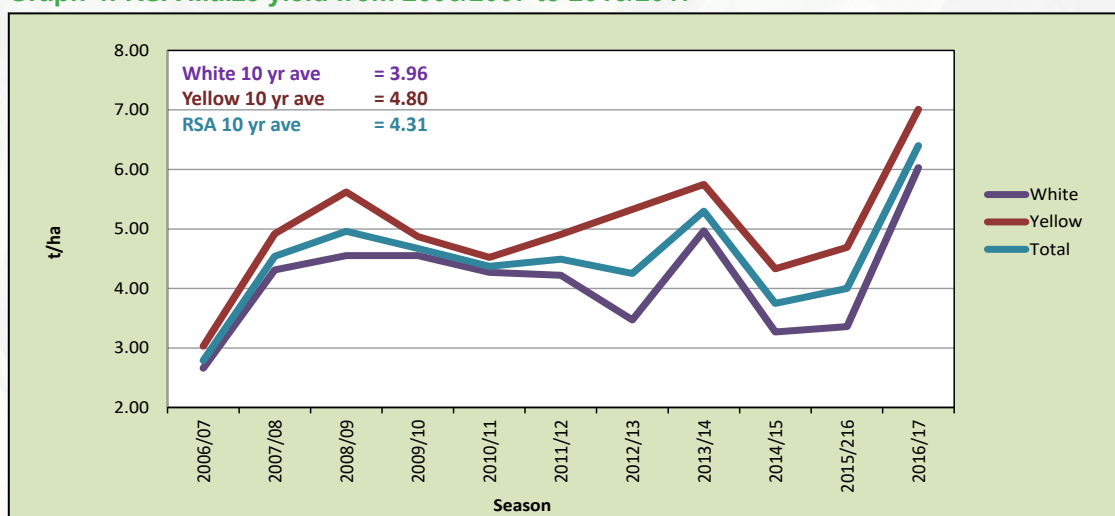
The total area utilized for maize production in the 2016/2017 season was 2 628 600 hectares, an increase of 35% compared to the previous season and 2.4% higher than the previous 10-year average. White maize was planted on 1 643 100 hectares and yellow maize on 985 500 hectares (1 014 750 and 932 000 hectares respectively in the 2015/2016 season).

Graph 3: Total RSA area utilized for maize production from 2006/2007 to 2016/2017



The maize yield also reached an all-time high of 6.40 t/ha this season compared to the 4.00 t/ha in the previous season and a 4.31 t/ha 10-year average. White maize yielded 6.03 t/ha and yellow maize 7.01 t/ha.

Graph 4: RSA Maize yield from 2006/2007 to 2016/2017



As with commercial maize production, both the area planted as well as the crop size of maize planted in the non-commercial agricultural sector increased compared to the previous season. The expected maize crop for this sector is 731 000 tons. Approximately 64% of non-commercial maize is produced in the Eastern Cape.

Table 1: Maize production overview - 2016/2017 season

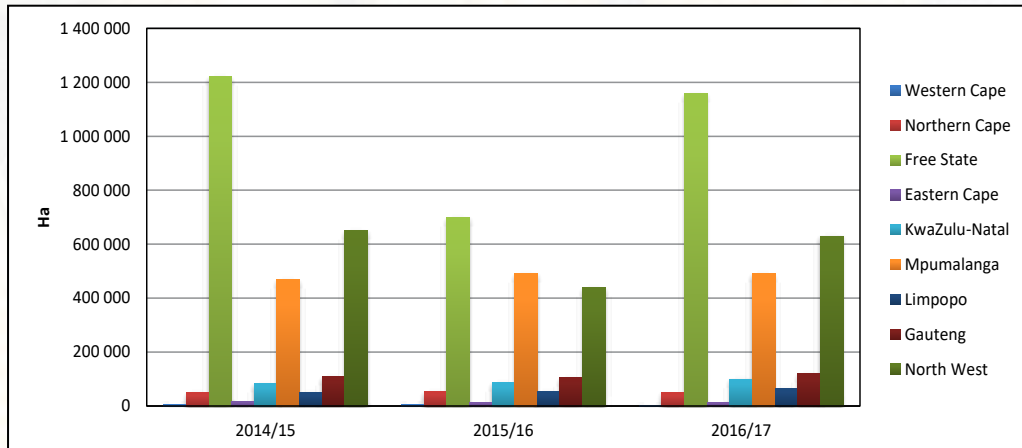
Province	Type of production	White			Yellow		
		Hectares planted, ha	Production, tons	Yield, t/ha	Hectares planted, ha	Production, tons	Yield, t/ha
Western Cape	Dryland	-	-	-	-	-	-
	Irrigation	200	2 000	10.00	2 000	20 000	10.00
	Total	200	2 000	10.00	2 000	20 000	10.00
Northern Cape	Dryland	-	-	-	-	-	-
	Irrigation	3 500	46 200	13.20	45 000	666 000	14.80
	Total	3 500	46 200	13.20	45 000	666 000	14.80
Free State	Dryland	770 000	4 723 400	6.13	335 000	2 034 000	6.07
	Irrigation	35 000	386 600	11.05	20 000	218 000	10.90
	Total	805 000	5 110 000	6.35	355 000	2 252 000	6.34
Eastern Cape	Dryland	3 050	15 860	5.20	5 900	28 500	4.83
	Irrigation	1 350	14 940	11.07	3 600	38 000	10.56
	Total	4 400	30 800	7.00	9 500	66 500	7.00
KwaZulu-Natal	Dryland	39 000	231 750	5.94	35 000	230 000	6.57
	Irrigation	11 000	118 250	10.75	15 000	160 000	10.67
	Total	50 000	350 000	7.00	50 000	390 000	7.80
Mpumalanga	Dryland	149 500	973 500	6.51	308 000	2 105 000	6.83
	Irrigation	10 500	114 500	10.90	22 000	237 500	10.80
	Total	160 000	1 088 000	6.80	330 000	2 342 500	7.10
Limpopo	Dryland	18 000	63 500	3.53	8 000	27 000	3.38
	Irrigation	22 000	236 500	10.75	16 000	165 000	10.31
	Total	40 000	300 000	7.50	24 000	192 000	8.00
Gauteng	Dryland	54 000	320 000	5.93	54 600	352 000	6.45
	Irrigation	6 000	70 000	11.67	5 400	62 000	11.48
	Total	60 000	390 000	6.50	60 000	414 000	6.90
North West	Dryland	487 000	2 244 250	4.61	100 000	456 000	4.56
	Irrigation	33 000	354 750	10.75	10 000	105 000	10.50
	Total	520 000	2 599 000	5.00	110 000	561 000	5.10
RSA	Dryland	1 520 550	8 572 260	5.64	846 500	5 232 500	6.18
	Irrigation	122 550	1 343 740	10.96	139 000	1 671 500	12.03
	Total	1 643 100	9 916 000	6.03	985 500	6 904 000	7.01

Figures provided by the CEC.

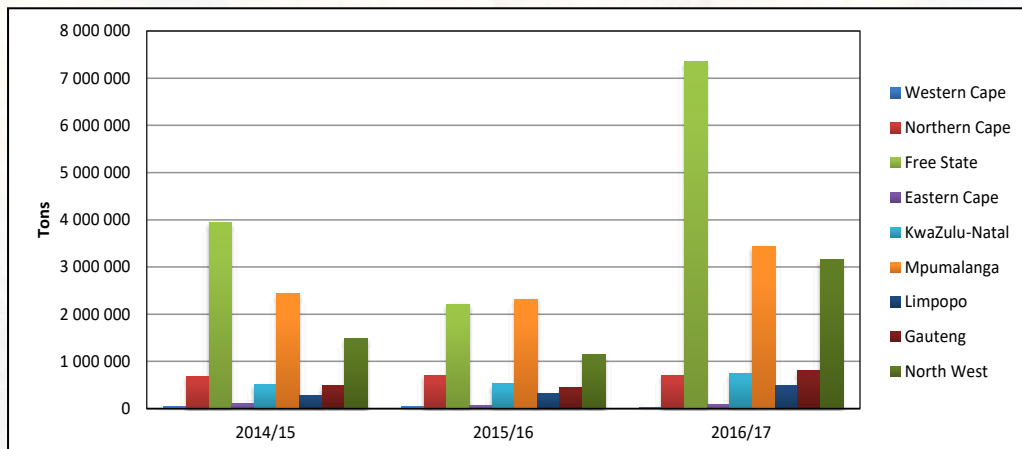
The major commercial maize-producing provinces are the Free State, Mpumalanga and North West, contributing 83% of the total maize production in the RSA. The Free State produced 7 362 000 tons of maize on 1 160 000 hectares with a yield of 6.35 t/ha. Mpumalanga produced 3 430 500 tons of maize on 490 000 hectares with a yield of 7.00 t/ha and North West harvested 3 160 000 tons of maize on 630 000 hectares yielding 5.02 t/ha. Yellow maize contributed 68% of the total maize production in Mpumalanga while the majority of maize produced in the North West (82%) and Free State (69%) was white.

Please see graphs 5 to 7 for provincial figures for area planted, production and yield over the last three seasons.

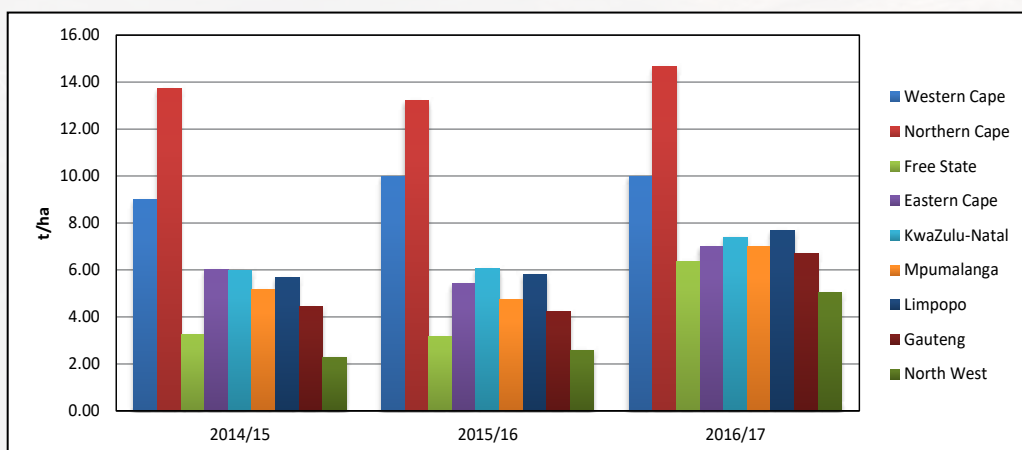
Graph 5: Area utilized for maize production per province over three seasons



Graph 6: Maize production per province over three seasons



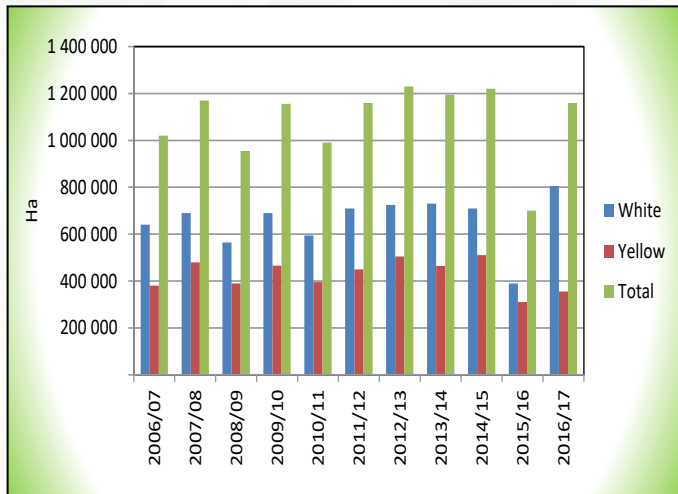
Graph 7: Maize yield per province over three seasons



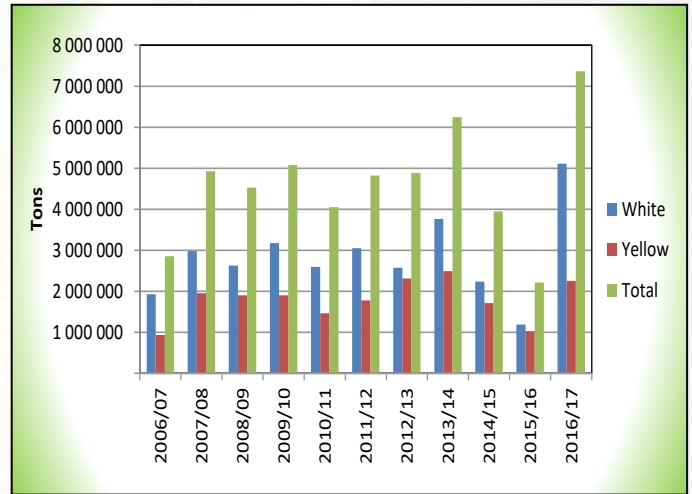
Figures provided by the CEC.

Graphs 8 to 13 provide an overview of the area planted and production figures for the Free State, Mpumalanga and North West from the 2006/2007 to 2016/2017 seasons.

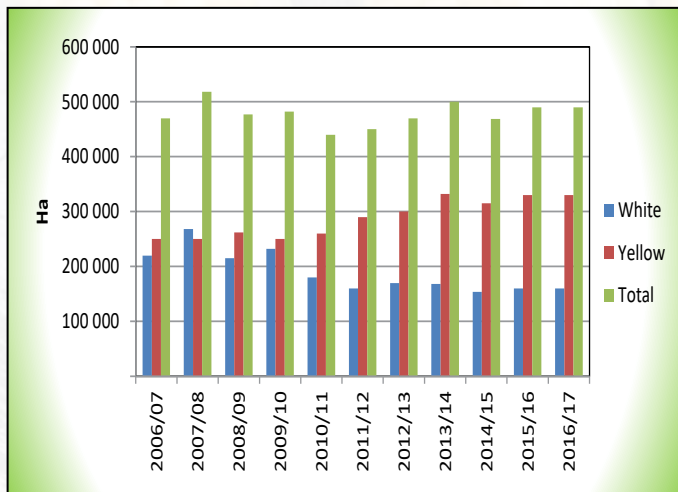
Graph 8: Area utilized for maize production in the Free State since 2006/2007



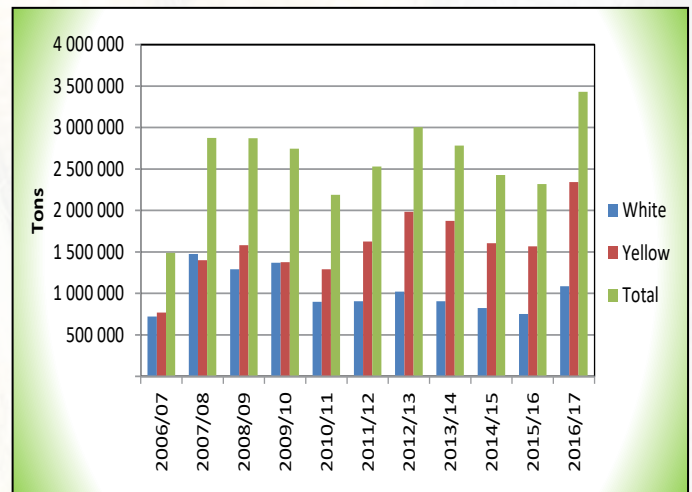
Graph 9: Maize production in the Free State since 2006/2007



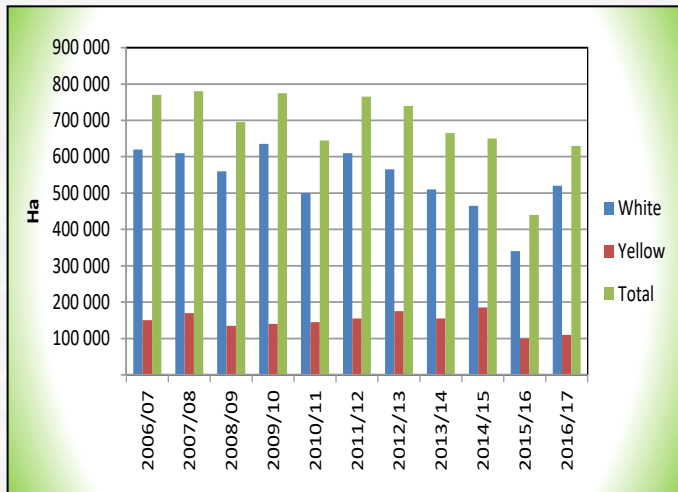
Graph 10: Area utilized for maize production in Mpumalanga since 2006/2007



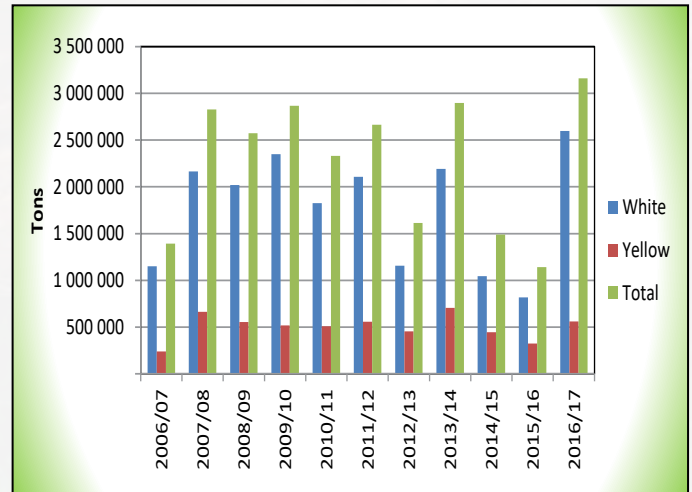
Graph 11: Maize production in Mpumalanga since 2006/2007



Graph 12: Area utilized for maize production in North West since 2006/2007



Graph 13: Maize production in North West since 2006/2007



Figures provided by the CEC.