

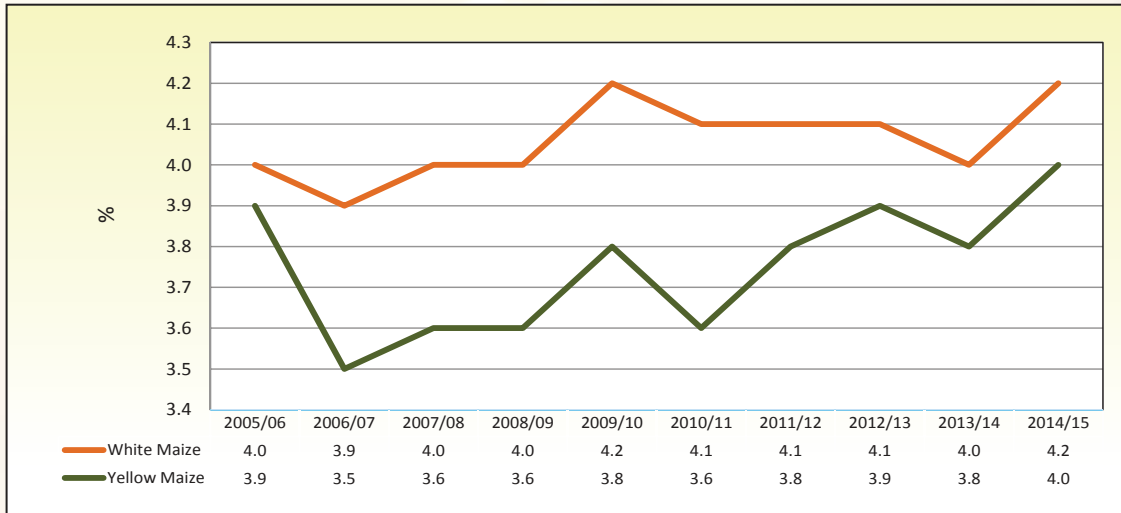
TABLE 20: NUTRITIONAL VALUES OF SOUTH AFRICAN WHITE AND YELLOW MAIZE 2005/2006 - 2014/2015

Season	Number of samples	Fat % (db)			Protein % (db)			Starch % (db)		
		ave.	min.	max.	ave.	min.	max.	ave.	min.	max.
White Maize										
2005/06	593	4.0	3.3	5.0	8.5	6.4	10.4	71.1	69.5	73.4
2006/07	563	3.9	2.9	4.8	9.3	7.5	12.0	72.9	70.1	74.9
2007/08	483	4.0	3.2	4.7	8.6	6.6	10.9	71.9	69.9	74.0
2008/09	483	4.0	3.5	5.1	8.3	6.4	10.4	72.4	70.7	74.2
2009/10	458	4.2	3.5	5.8	8.4	6.6	10.0	72.6	70.6	74.6
2010/11	413	4.1	2.8	4.6	7.9	6.1	9.5	73.6	71.9	77.0
2011/12	577	4.1	3.3	4.7	8.6	6.3	11.2	72.6	70.6	74.3
2012/13	508	4.1	3.3	5.3	9.2	6.4	11.5	71.4	68.5	73.6
2013/14	451	4.0	3.4	5.0	8.6	6.7	10.1	72.9	70.9	75.1
2014/15	485	4.2	3.3	5.8	9.4	6.3	11.2	72.6	69.8	74.9
Weighted Average		4.1			8.7			72.4		
Minimum		2.8			6.1			68.5		
Maximum		5.8			12.0			77.0		
Yellow Maize										
2005/06	307	3.9	3.2	4.9	8.4	6.6	9.7	71.5	69.5	73.3
2006/07	337	3.5	2.8	4.6	9.5	6.9	12.7	73.3	70.5	75.2
2007/08	417	3.6	2.9	4.8	8.4	6.9	10.4	72.3	70.0	75.0
2008/09	327	3.6	2.9	4.7	8.2	6.2	10.6	73.2	71.1	74.8
2009/10	342	3.8	3.3	4.7	8.1	6.5	10.1	73.4	71.0	75.4
2010/11	280	3.6	2.8	4.4	7.8	6.3	9.8	74.2	72.2	76.0
2011/12	423	3.8	3.0	4.6	8.9	7.0	11.3	73.0	71.0	75.0
2012/13	492	3.9	2.9	4.7	9.2	7.1	12.8	71.9	69.4	73.9
2013/14	479	3.8	3.0	4.8	8.6	6.0	11.3	73.1	70.8	75.7
2014/15	515	4.0	3.1	5.1	9.5	7.1	11.9	72.9	70.8	75.2
Weighted Average		3.8			8.7			72.8		
Minimum		2.8			6.0			69.4		
Maximum		5.1			12.8			76.0		
White and Yellow Maize										
2005/06	900	4.0	3.2	5.0	8.4	6.4	10.4	71.2	69.5	73.4
2006/07	900	3.7	2.8	4.8	9.4	6.9	12.7	73.0	70.1	75.2
2007/08	900	3.8	2.9	4.8	8.5	6.6	10.9	72.1	69.9	75.0
2008/09	810	3.8	2.9	5.1	8.3	6.2	10.6	72.7	70.7	74.8
2009/10	800	4.0	3.3	5.8	8.3	6.5	10.1	72.9	70.6	75.4
2010/11	693	3.9	2.8	4.6	7.9	6.1	9.8	73.8	71.9	77.0
2011/12	1000	4.0	3.0	4.7	8.7	6.3	11.3	72.8	70.6	75.0
2012/13	1000	4.0	2.9	5.3	9.2	6.4	12.8	71.6	68.5	73.9
2013/14	930	3.9	3.0	5.0	8.6	6.0	11.3	73.0	70.8	75.7
2014/15	1000	4.1	3.1	5.8	9.4	6.3	11.9	72.8	69.8	75.2
Weighted Average		3.9			8.7			72.6		
Minimum		2.8			6.0			68.5		
Maximum		5.8			12.8			77.0		

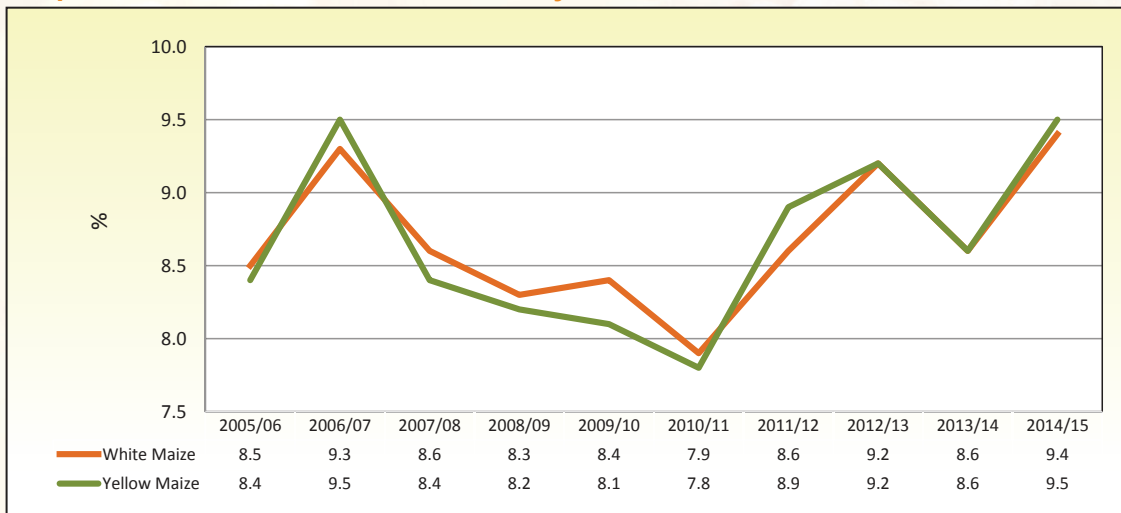
Please note:

Different starch methods have been used over years and data have been corrected accordingly.

Graph 42: Fat content of white and yellow maize over 10 seasons



Graph 43: Protein content of white and yellow maize over 10 seasons



Graph 44: Starch content of white and yellow maize over 10 seasons

