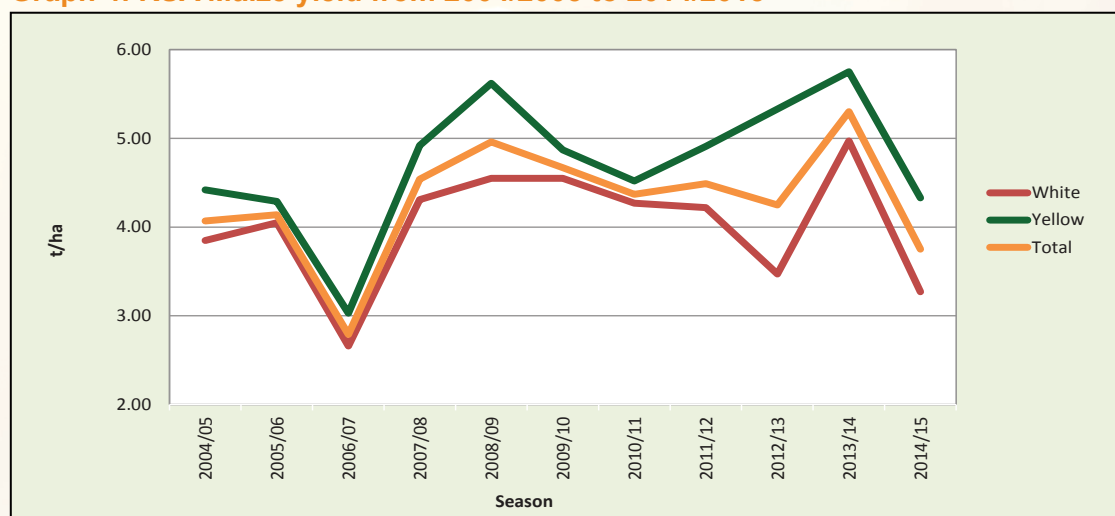


The maize yield decreased from 5.30 t/ha in the previous season to 3.75 t/ha this season. White maize yielded 3.27 t/ha and yellow maize 4.33 t/ha, representing decreases of 34% and 25% respectively compared to the previous season. The lower yields observed were a result of dry and hot weather conditions during the growing season.

Graph 4: RSA Maize yield from 2004/2005 to 2014/2015



As with commercial maize production, both the area planted as well as the crop size of maize planted in the non-commercial agricultural sector decreased compared to the previous season. Approximately 60% of non-commercial maize is produced in the Eastern Cape.

Table 1: Maize production overview - 2014/2015 season

Province	Type of production	White			Yellow		
		Hectares planted, ha	Production, tons	Yield, t/ha	Hectares planted, ha	Production, tons	Yield, t/ha
Western Cape	Dryland	-	-	-	-	-	-
	Irrigation	450	4 050	9.00	3 800	34 200	9.00
	Total	450	4 050	9.00	3 800	34 200	9.00
Northern Cape	Dryland	-	-	-	-	-	-
	Irrigation	3 500	35 000	10.00	46 000	644 000	14.00
	Total	3 500	35 000	10.00	46 000	644 000	14.00
Free State	Dryland	695 000	2 110 500	3.04	466 000	1 312 000	2.82
	Irrigation	15 000	126 000	8.40	44 000	396 500	9.01
	Total	710 000	2 236 500	3.15	510 000	1 708 500	3.35
Eastern Cape	Dryland	1 700	5 100	3.00	6 500	19 500	3.00
	Irrigation	900	10 500	11.67	7 500	64 500	8.60
	Total	2 600	15 600	6.00	14 000	84 000	6.00
KwaZulu-Natal	Dryland	28 500	124 000	4.35	35 000	195 000	5.57
	Irrigation	11 500	100 000	8.70	10 000	88 500	8.85
	Total	40 000	224 000	5.60	45 000	283 500	6.30
Mpumalanga	Dryland	146 000	745 000	5.10	302 500	1 488 000	4.92
	Irrigation	8 000	79 000	9.88	12 500	117 300	9.38
	Total	154 000	824 000	5.35	315 000	1 605 300	5.10
Limpopo	Dryland	13 500	30 750	2.28	11 300	20 000	1.77
	Irrigation	15 000	126 000	8.40	9 700	104 000	10.72
	Total	28 500	156 750	5.50	21 000	124 000	5.90
Gauteng	Dryland	39 650	144 800	3.65	60 000	240 000	4.00
	Irrigation	4 350	48 800	11.22	5 000	52 500	10.50
	Total	44 000	193 600	4.40	65 000	292 500	4.50
North West	Dryland	448 000	896 000	2.00	167 500	284 000	1.70
	Irrigation	17 000	150 000	8.82	17 500	160 000	9.14
	Total	465 000	1 046 000	2.25	185 000	444 000	2.40
RSA	Dryland	1 372 350	4 056 150	2.96	1 048 800	3 558 500	3.39
	Irrigation	75 700	679 350	8.97	156 000	1 661 500	10.65
	Total	1 448 050	4 735 500	3.27	1 204 800	5 220 000	4.33

Figures provided by the CEC.